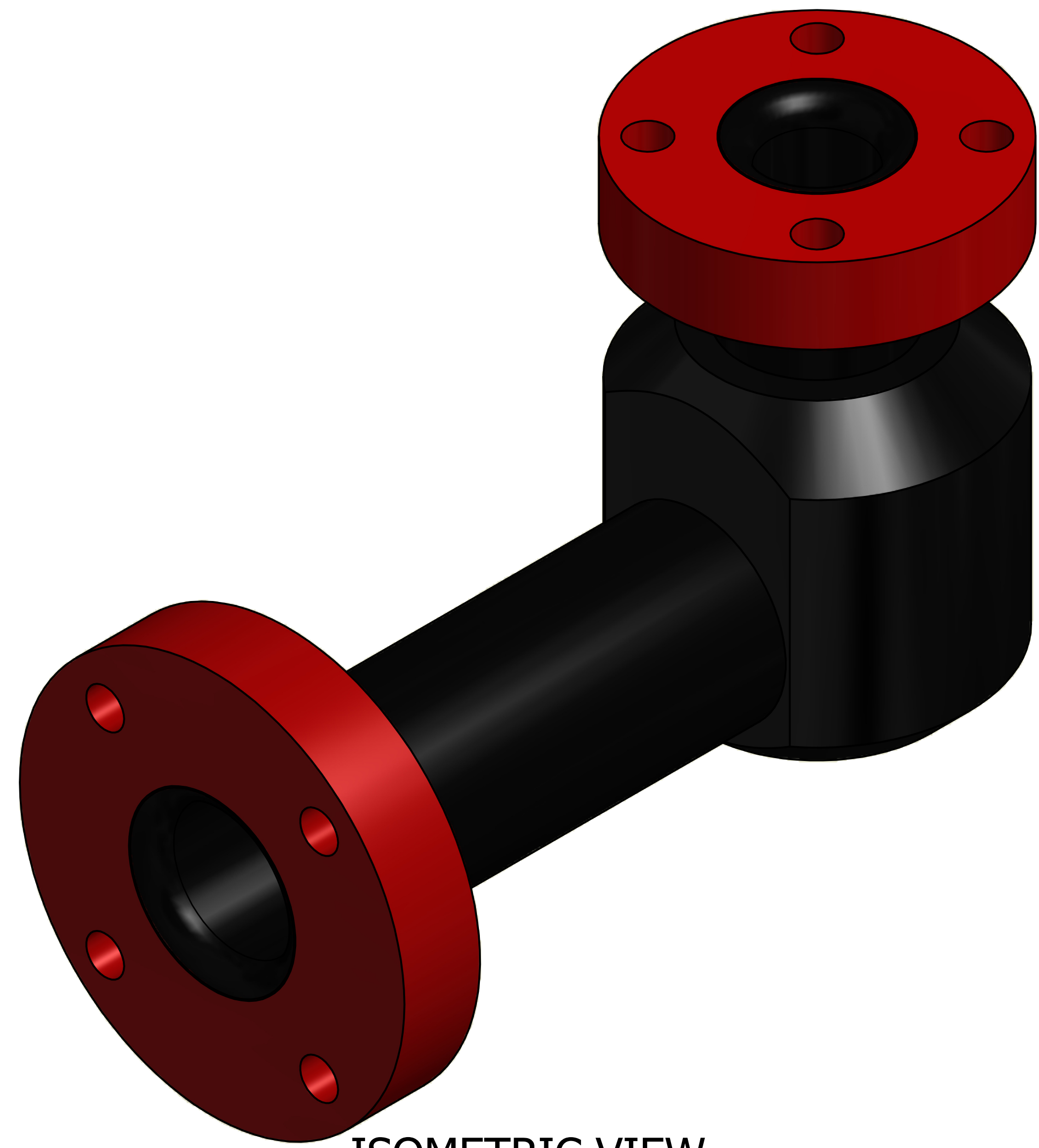
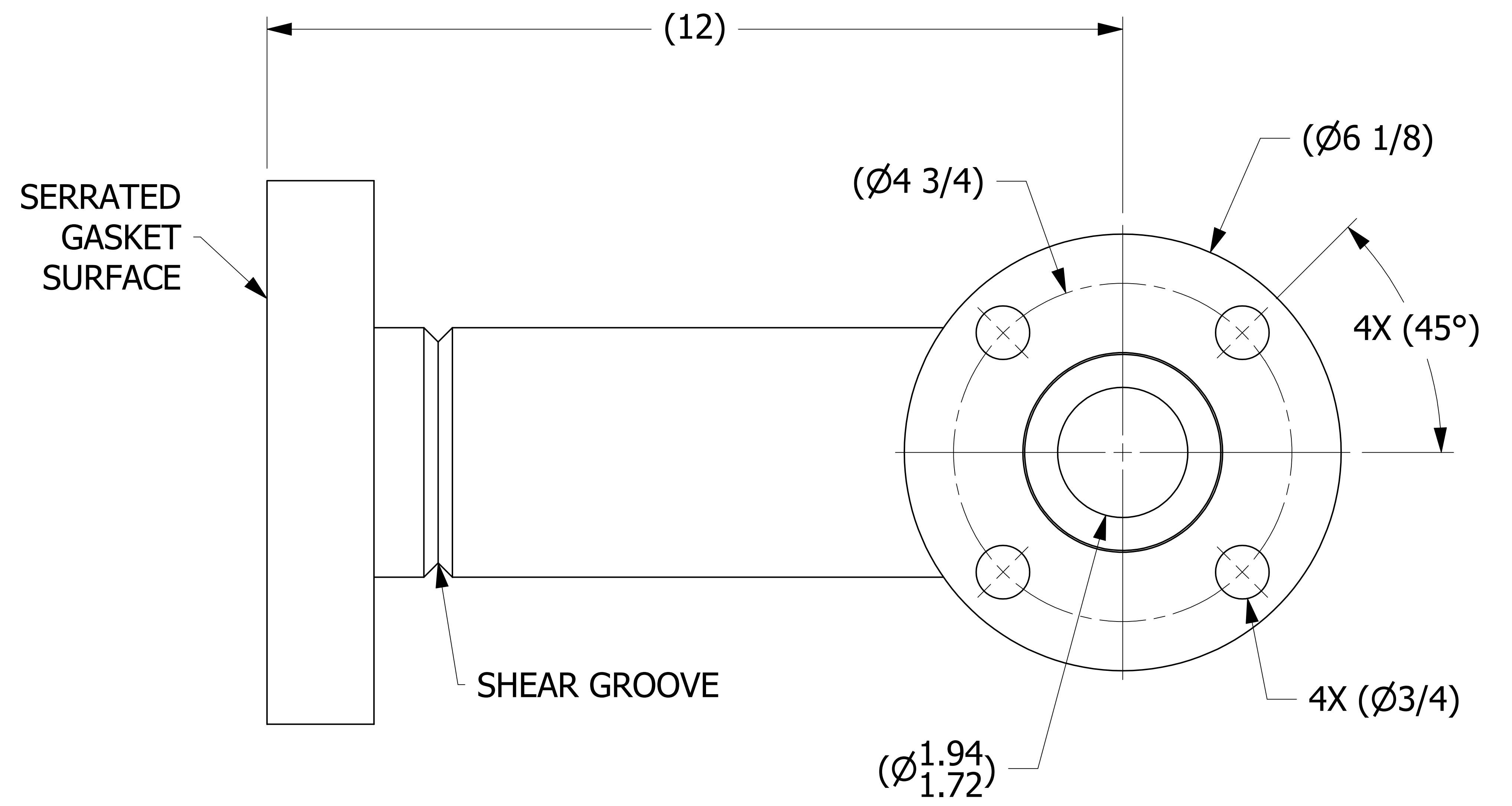
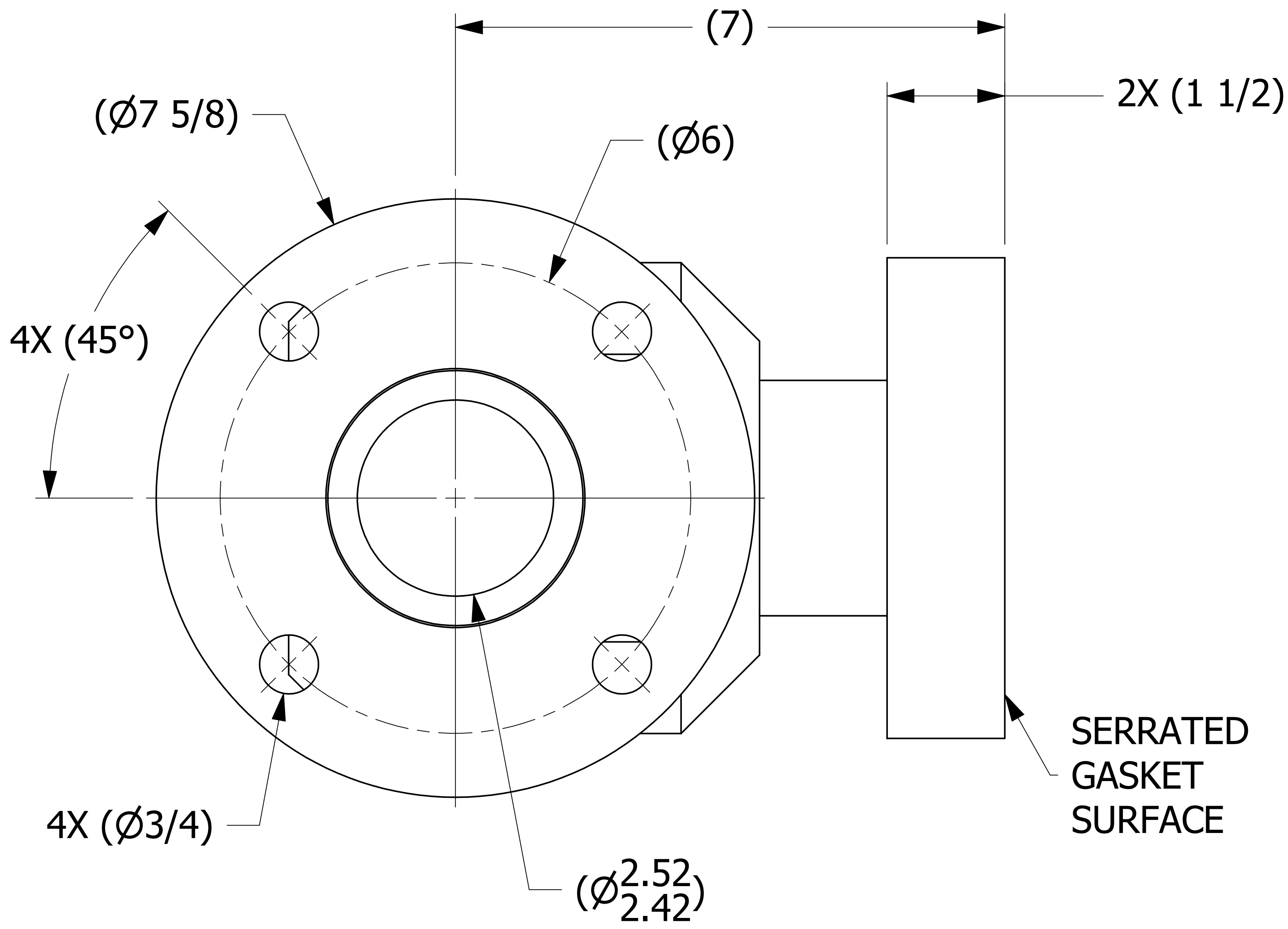


SALES DRAWING SALES DRAWING SALES DRAWING



ISOMETRIC VIEW

SALES DRAWING SALES DRAWING SALES DRAWING

A	TAK	7-18-16	RELEASED FOR PRODUCTION
REV	BY	DATE	DESCRIPTION

UNLESS OTHERWISE SPECIFIED DIMENSIONAL TOLERANCES FRACTIONAL: ±1/16 X.XX: ±.03 X.XXX: ±.015 ANGULAR: ±1° DEBURR ALL SHARP EDGES. ALL MACHINED SURFACES TO HAVE A 125 RMS FINISH UNLESS NOTED OTHERWISE. THIRD ANGLE PROJECTION	DRAWN BY:	TAK
	CHECKED BY:	WRB
	PROTOTYPE BY:	TAK
	PROTOTYPE DATE:	6/24/2016
	APPROVED FOR PRODUCTION BY:	TAK
	PRODUCTION DATE:	7/18/2016

<b>SALCO PRODUCTS, INC.</b>		
PART NAME: PIPE ELBOW 3"X2"X90°		
MATERIAL: SALCO PE		
PROJECT #: H160624F	SHEET #: 1 OF 1	SCALE: 1:1
DRAWING #: E43908	PART #: HS3X2X90PE8	

THIS PRINT, PROPERTY OF SALCO PRODUCTS INC. CONTAINS PROPRIETARY INFORMATION AND MUST NOT BE COPIED, REPRODUCED, OR USED DETRIMENTALLY TO OUR INTEREST.